

New Jersey Semi-Conductor Products, Inc.

20 STERN AVE.
 SPRINGFIELD, NEW JERSEY 07081
 U.S.A.

TELEPHONE: (201) 376-2
 (212) 227-6
 FAX: (201) 376-8

PARAMETERS

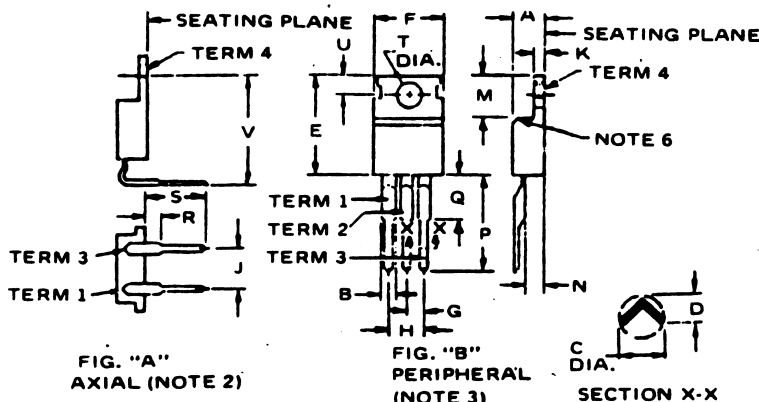
2N6290

SI NPN POWER BJT, I(C) = 5 A TO 9.9 A

Description: Si NPN Power BJT, I(C) = 5 A to 9.9 A

Manufacturer.....
 Mil/High-Rel? (Y/N).....
 I_c Max. (A)..... 7.0
 V_{br} CEO..... 50
 V_{br} CBO..... 60
 Max. PD (W)..... 16#
 Derate Above 25xC..... 320m#
 Min hFE..... 30
 Max. hFE..... 150
 @I_c (test) (A)..... 2.5
 @V_{CE} (V)..... 4.0
 Trans. Freq (Hz) Min..... 4.0M
 I_{cb0} Max. @V_{cb} Max. (A)..... 1.0m0
 R(sat) (j)..... 50m
 Tr Max. (s).....
 t(f) Max. (S).....
 Oper. Temp (xC) Max..... 150u
 Pkg Style..... TO-220AB
 Surface Mounted (Y/N)..... N
 Pinout Equivalence Number..... 3-15

u Junction Temperature # Case Temperature 2 I_t(rms) 0 I_{CEO}



NOTES:

1. Refer to rules for dimensioning semiconductor product outlines included in Publication No. 76.
2. Figure "A", Axial Terminal Configuration, applicable.
3. Figure "B", Peripheral Terminal Configuration, applicable.
4. Alternate lead configurations allowed within C and D.
5. Tab contour optional within M and P.
6. Chamfer optional.
7. Position of lead to be measured .050 - .055 below seating plane.
8. Position of lead to be measured .250 - .255 from bottom of dimension E.

	A	B	C	D	E	F	G	H	J	K	M	N	P	Q	R	S	T	U	V	NOTES
Y229a/ TO220AA	.140 .190	.045 .070	.020 .045	.012 .045	.560 .625	.380 .420			.190 .210	.020 .055	.230 .270	.080 .115			.050 MAX	.340 .422	.132 .147	.100 .120	.580 .610	2
Y220b/ TO220AB	.140 .190	.045 .070	.020 .045	.012 .045	.560 .650	.380 .420	.090 .110	.190 .210		.020 .055	.230 .270	.080 .115	.500 .580	.250 MAX			.132 .161	.100 .135		3
NOTES			5	5		6	9	9	8		6									

